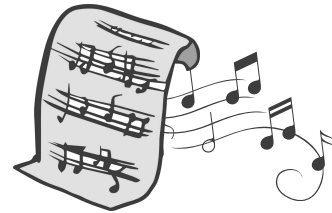


# Spring Showcase Firth Park Brass

You will need to arrive at 5:15pm at Victoria Hall. You will find people waiting to register you and show you where to go next.



It is now time to get yourself ready for your rehearsal. This is also a chance to catch up with friends whilst you make sure you are ready.

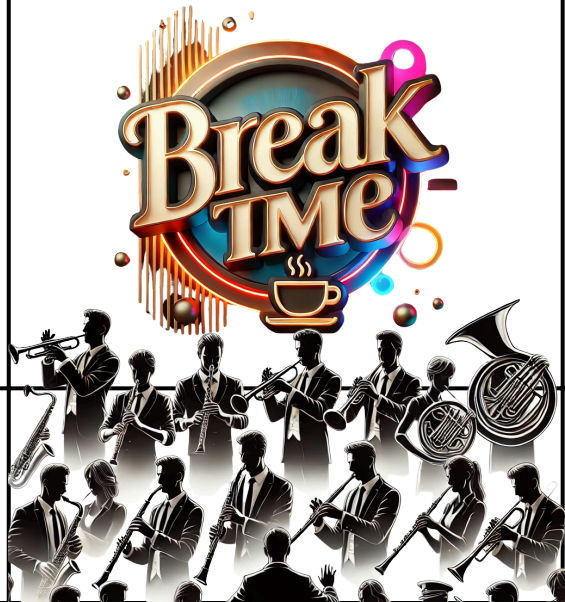


Here you will then get a chance to practise with your group before the concert.



Now you will get time for a break. Feel free to go to the toilet and have a snack before we start the performances.

Your group leader will make sure you know when your performance is and what you will be doing!



The concert will start at 7pm. You will be watching the other groups play from the audience.

We think the concert will finish at 8:45pm.

When the Concert has finished, your group leader will take you to collect your things before taking you to meet your adults.

Make sure we see who you're leaving with!  
(Unless you have permission to go by yourself!)